



SEWERAGE CATALOGUE

**COMMERCIAL
DIVISIONS**

SEWERAGE

CATALOGUE

Polymer concrete enclosures and covers with vents, grids and precast manholes and wells.

WELL

36", 48" DIAMETER

Curb and cover with extension ring made of polymer concrete. Fiberglass reinforced plastic body.

VERSIONS:		LIGHT TRAFFIC	HEAVY TRAFFIC
TIER:		TIER 15	TIER 22

The well is manufactured according to the customer's specifications and measures.

Couplings: according to customer's specifications, different diameters and pipe brands 40", 60", 80" 100", 120" of depth.



SLOPED WELL

36", 48" DIAMETER

Curb and cover with extension ring made of polymer concrete. Fiberglass reinforced plastic body.

The well is manufactured according to the customer's specifications and measures.

Couplings: according to customer's specifications, different diameters and pipe brands.

36", 48" of diameter.

40", 60", 80" 100", 120" of depth.

VERSIONS:		LIGHT TRAFFIC	HEAVY TRAFFIC
TIER:		TIER 15	TIER 22

FRAME AND COVER FOR VALVE BOX

24" X 24"

Frame and cover of polymer concrete for valve box, variety of colors and logo engraving.

VERSIONS:	PEDESTRIAN	LIGHT TRAFFIC	
TIER:	TIER 8	TIER 15	



+52 1 477-201-0490
+52 1 444-408-7731



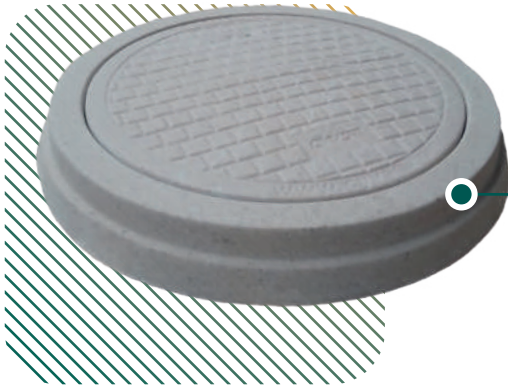
OFFICES: Valentín Canalizo #321. León, Gto. México 37234

FACTORY: Av. San Francisco #24 Col. Granjas de San Francisco.

POLYMER CONCRETE CURB AND COVER

25" DIAETER

Polymer concrete curb and cover without vents, "T" type retractable handle, variety of colors y logo engraving

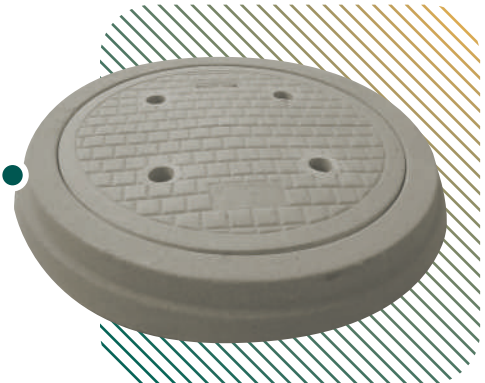


VERSIONS:			HEAVY TRAFFIC
TIER:			TIER 22

POLYMER CONCRETE CURB AND COVER WITH VENTS

25" DIAMETER

Polymer concrete curb and cover with four vents, "T" type retractable handle, variety of colors and logo engraving



VERSIONS:			HEAVY TRAFFIC
TIER:			TIER 22

POLYMER CONCRETE CURB AND GRID

25" DIAMETER

Grid-type polymer concrete curb and cover, double screw, variety of colors



VERSIONS:	PEDESTRIAN	LIGHT TRAFFIC
TIER:	TIER 8	TIER 15



+52 1 477-201-0490
+52 1 444-408-7731



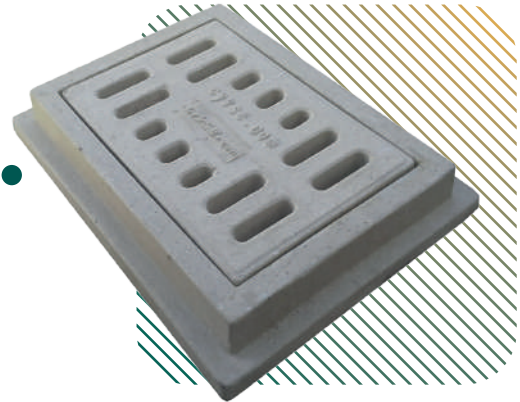
OFFICES: Valentín Canalizo #321. León, Gto. México 37234

FACTORY: Av. San Francisco #24 Col. Granjas de San Francisco.

POLYMER CONCRETE FRAME AND GRID

16" X 24"

Polymer concrete frame and cover with grid for vehicular traffic, variety of colors and engraved logo.

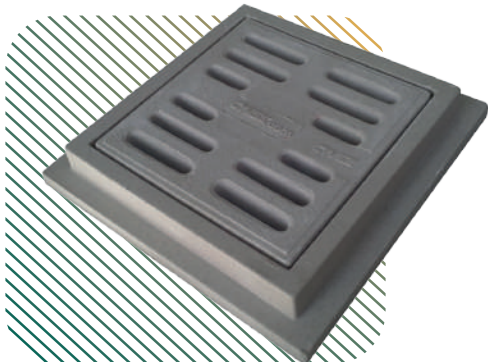


VERSIONS:			HEAVY TRAFFIC
TIER:			TIER 22

POLYMER CONCRETE FRAME AND GRID

20"X 20"

Polymer concrete frame and cover with grid for vehicular traffic, variety of colors and engraved logo.

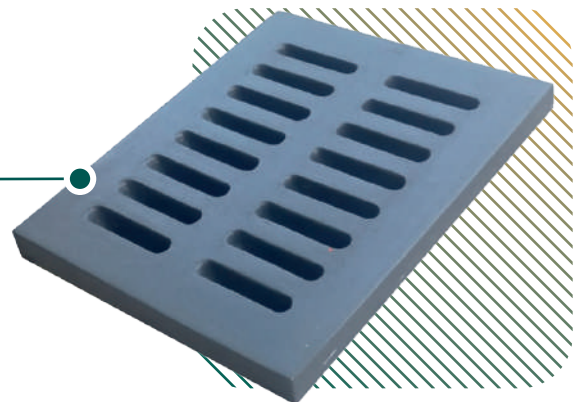


VERSIONS:			HEAVY TRAFFIC
TIER:			TIER 22

POLYMER CONCRETE RAIN GRID

22" X 28" X 2"

Polymer concrete rain grid



VERSIONS:	PEDESTRIAN		
TIER:	TIER 8		



+52 1 477-201-0490
+52 1 444-408-7731



OFFICES: Valentín Canalizo #321. León, Gto. México 37234
FACTORY: Av. San Francisco #24 Col. Granjas de San Francisco.

ENCLOSURE WITH POLYMER CONCRETE GRID

8" X 8" X 8"

Enclosure 8"X8"X8", cover with orifices and body with pipe inlets

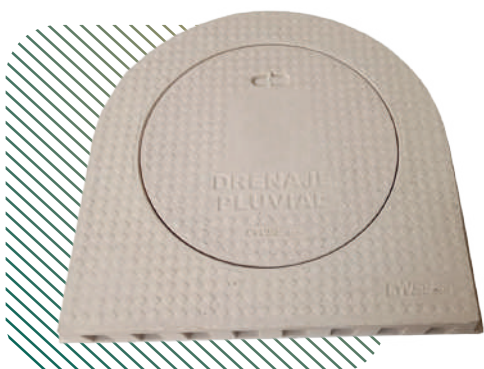
VERSIONS:	PEDESTRIAN		
TIER:	TIER 8		



STORMWATER DRAIN

36"X 36" X 6"

Stormwater drain with body and cover of polymer concrete for sidewalks. 24" diameter access for maintenance



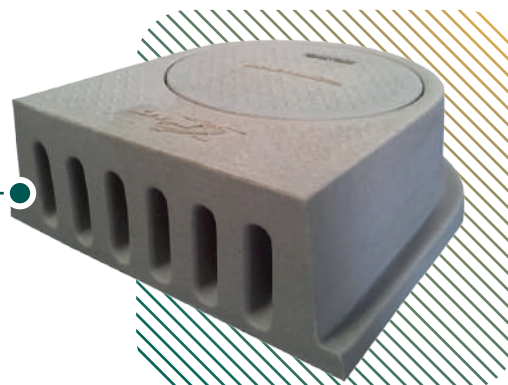
VERSIONS:	PEDESTRIAN		
TIER:	TIER 8		

STORMWATER DRAINS

16" X 24" X 8"

Stormwater drain with polymer concrete body and cover for sidewalks

VERSIONS:	PEDESTRIAN		
TIER:	TIER 8		



+52 1 477-201-0490
+52 1 444-408-7731



OFFICES: Valentín Canalizo #321. León, Gto. México 37234
FACTORY: Av. San Francisco #24 Col. Granjas de San Francisco.



ELECTRIFICATION CATALOGUE

**COMMERCIAL
DIVISIONS**

ELECTRIFICATION

CATALOGUE

Polymer concrete enclosures and covers with fiberglass reinforced plastic bodies for lighting, low and medium voltage.

POLYMER RING AND COVER 84-A

84 CMS OR 33" DIAMETER

Ring and cover 84-A of polymer concrete, CFE 2DI00-38 standard, with double screw and retractable "U" type handle, test notice under code 03

VERSIONS:		LIGHT TRAFFIC	
TIER:		TIER 15	



POLYMER RING AND COVER 84-B

84 CMS OR 33" DIAMETER

Polymer concrete ring and cover 84-B, CFE 2DI00-39 standard, with double screw and "u" type retractable handle. Test notice under code 03, application: medium voltage enclosure for sidewalk use.



VERSIONS:	PEDESTRIAN		
TIER:	TIER 8		



+52 1 477-201-0490
+52 1 444-408-7731



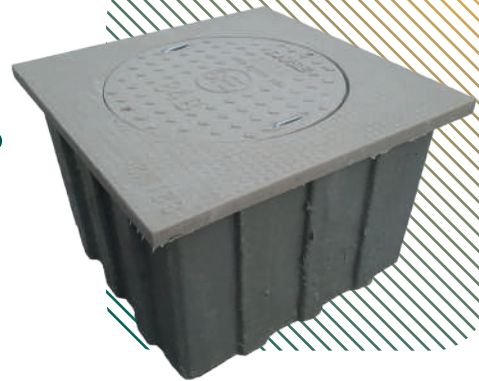
OFFICES: Valentín Canalizo #321. León, Gto. México 37234
FACTORY: Av. San Francisco #24 Col. Granjas de San Francisco.

MANHOLE

46"X46"X36"

Medium tension manhole for Sidewalk with slab and cover made of polymer concrete and fiberglass reinforced plastic body

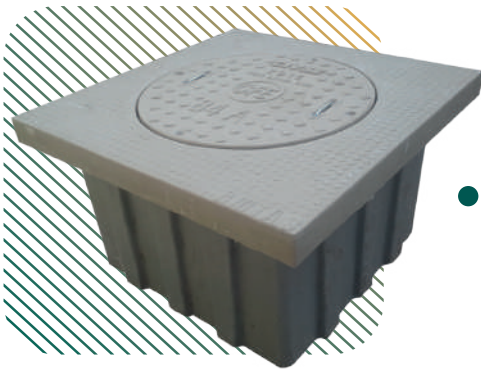
VERSIONS:	PEDESTRIAN		
TIER:	TIER 8		



MANHOLE

60"X 60"X 36"

Medium voltage manhole for stream with polymer concrete slab and cover and fiberglass reinforced plastic body.



VERSIONS:	PEDESTRIAN	LIGHT TRAFFIC	
TIER:	TIER 8	TIER 15	

LOW VOLTAGE MANHOLE

20"X 32" X 24"

26"X 40"X 24"

Low voltage manhole, with frame and cover of polymer concrete and fiberglass reinforced plastic body

VERSIONS:	PEDESTRIAN	LIGHT TRAFFIC	
TIER:	TIER 8	TIER 15	



+52 1 477-201-0490
+52 1 444-408-7731



OFFICES: Valentín Canalizo #321. León, Gto. México 37234
FACTORY: Av. San Francisco #24 Col. Granjas de San Francisco.

ENCLOSURE FOR LIGHTING

12"X12"X12"

16"X16"X16"

16"X16"X24"

Polymer concrete frame and cover and fiberglass reinforced plastic body, screws as a closing system and bolt for lifting the cover.

VERSIONS:	PEDESTRIAN		
TIER:	TIER 5		

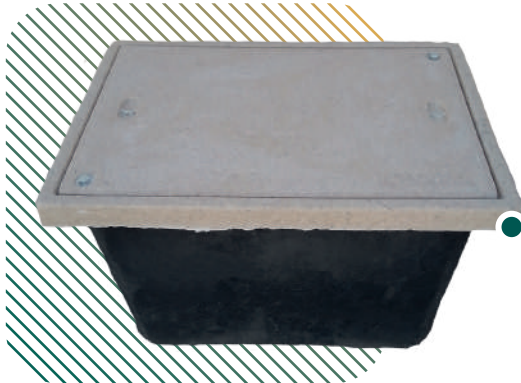


POLYMER CONCRETE MANHOLE

16"X24"X16"

16"X24"X 24"

Polymer concrete frame and cover and fiberglass reinforced plastic body, screws as a closing system and bolt for lifting the cover.



VERSIONS:	PEDESTRIAN		
TIER:	TIER 8		

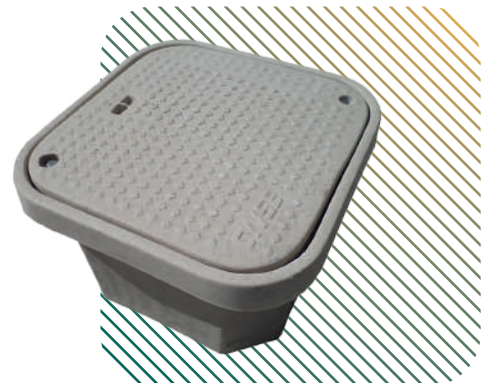
ELECTRIC MANHOLE GENERAL USES

24" X 24"X 16"

24" X 24"X 24"

Polymer concrete frame and cover and fiberglass reinforced plastic body, screws as a closing system and bolt for lifting the cover.

VERSIONS:	PEDESTRIAN	LIGHT TRAFFIC	
TIER:	TIER 8	TIER 15	



+52 1 477-201-0490
+52 1 444-408-7731



OFFICES: Valentín Canalizo #321. León, Gto. México 37234
FACTORY: Av. San Francisco #24 Col. Granjas de San Francisco.

CYLINDRICAL ENCLOSURE

10" X 16"

12" X 16"

16" X 16"

Cylindrical enclosure for lighting with polymer concrete ring and cover, double screw and PVC body. Danger" label..



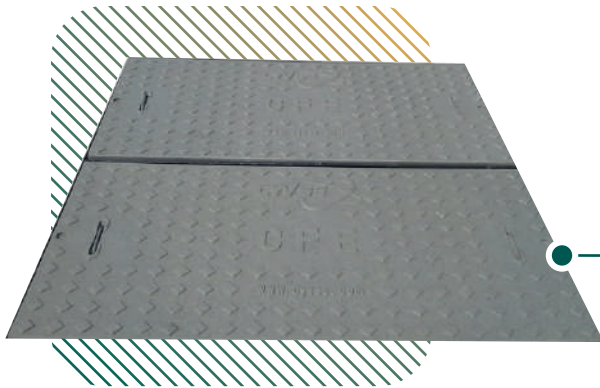
VERSIONS:	PEDESTRIAN		
TIER:	TIER 5		

POLYMER TRENCH COVER

40" X 40"

60" X 60"

Set of polymer covers for medium voltage manholes with double "u" type galvanized retractable handles for use in sidewalk or stream, galvanized frame optional.



VERSIONS:	PEDESTRIAN	LIGHT TRAFFIC	
TIER:	TIER 8	TIER 15	

WWW.CYVSE.COM

We are a company with more than 14 years of experience. We use state-of-the-art technology to manufacture high-quality precast polymer concrete covers and enclosures to offer the best product to our customers.



+52 1 477-201-0490
+52 1 444-408-7731



OFFICES: Valentín Canalizo #321. León, Gto. México 37234
FACTORY: Av. San Francisco #24 Col. Granjas de San Francisco.



FIBERGLASS CATALOGUE

**COMMERCIAL
DIVISIONS**

FIBERGLASS

CATALOGUE

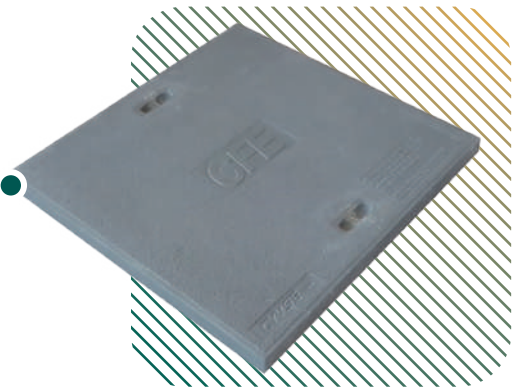
Covers manufactured for electrical trenches made of polymer laminate for pedestrian traffic and vehicular crossings.

FIBERGLASS COVER

36" X 48"

Fiberglass cover for trench. Pedestrian use

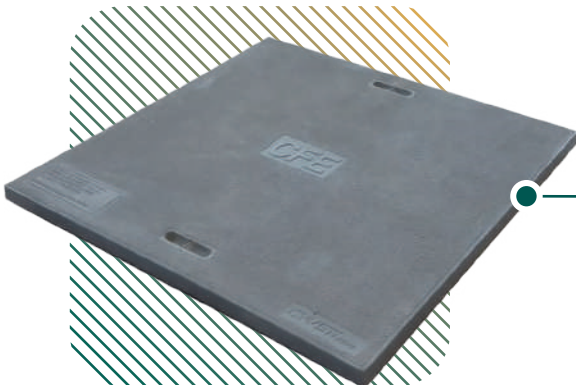
VERSIONS:	PEDESTRIAN		
TIER:	TIER 8		



FIBERGLASS COVER

40" X 48"

Fiberglass cover for trench. Pedestrian use



VERSIONS:	PEDESTRIAN		
TIER:	TIER 8		



+52 1 477-201-0490
+52 1 444-408-7731



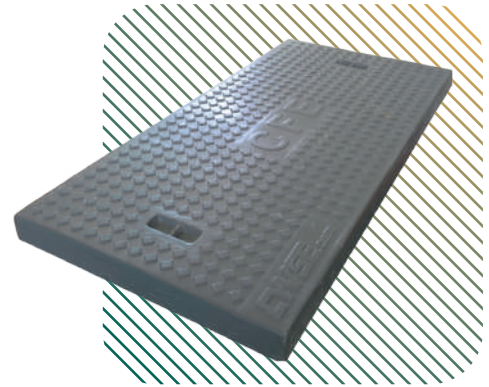
OFFICES: Valentín Canalizo #321. León, Gto. México 37234
FACTORY: Av. San Francisco #24 Col. Granjas de San Francisco.

FIBERGLASS COVER

20" X 40"

Fiberglass cover for trench.
Pedestrian use

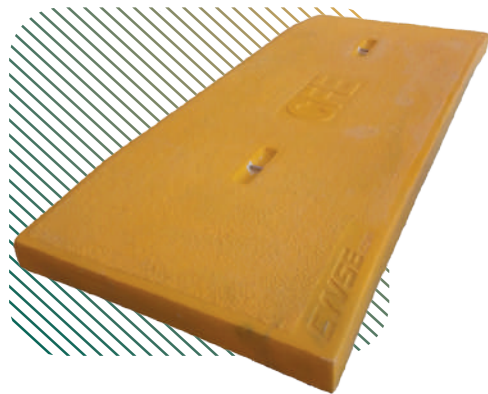
VERSIONS:	PEDESTRIAN		
TIER:	TIER 8		



FIBERGLASS COVER, RAMP TYPE VEHICULAR USE

20" X 48"
20" X 60"

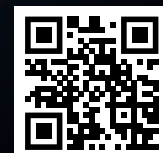
Fiberglass cover, ramp type
vehicular use



VERSIONS:		LIGHT TRAFFIC	
TIER:		TIER 15	

WWW.CYVSE.COM

We are a company with more than 14 years of experience. We use state-of-the-art technology to manufacture high-quality precast polymer concrete covers and enclosures to offer the best product to our customers.



+52 1 477-201-0490
+52 1 444-408-7731



OFFICES: Valentín Canalizo #321. León, Gto. México 37234
FACTORY: Av. San Francisco #24 Col. Granjas de San Francisco.



TELECOMMUNICATIONS CATALOGUE

**COMMERCIAL
DIVISIONS**

TELECOMMUNICATIONS

CATALOGUE

Polymer concrete covers and enclosures with fiberglass reinforced plastic bodies for fiber optic installations.

PEDESTAL

16" X 16" X 30"

Polymer concrete frame with fiberglass reinforced plastic body and pedestal.

VERSIONS:	PEDESTRIAN		
TIER:	TIER 8		



FIBER OPTIC CONICAL ENCLOSURE

18"X36" Ø

Polymer concrete cover with double stainless steel bolt for lifting. Fiberglass reinforced plastic body.



VERSIONS:	PEDESTRIAN		
TIER:	TIER 8		



+52 1 477-201-0490
+52 1 444-408-7731



OFFICES: Valentín Canalizo #321. León, Gto. México 37234
FACTORY: Av. San Francisco #24 Col. Granjas de San Francisco.

POLYMER CONCRETE COVER

20" X 24" X 2"

Polymer concrete cover

VERSIONS:	PEDESTRIAN	LIGHT TRAFFIC	
TIER:	TIER 8	TIER 15	



MANHOLE WITH ONE COVER

24" X 30" X 24"

Manufactured with polymer concrete frame and cover and fiberglass body. Bolt for cover lifting.



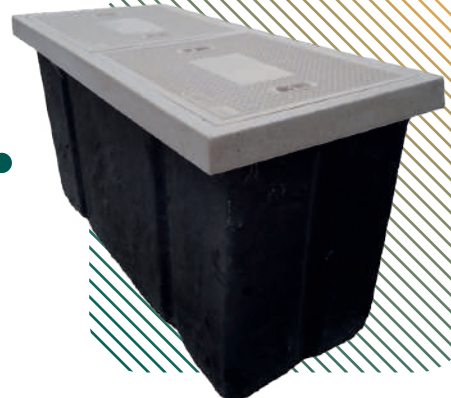
VERSIONS:	PEDESTRIAN	LIGHT TRAFFIC	
TIER:	TIER 8	TIER 15	

MANHOLE WITH TWO COVERS

24" X 48" X 24"

Frame and two polymer concrete covers with fiberglass body and bolt for cover lifting.

VERSIONS:	PEDESTRIAN	LIGHT TRAFFIC	
TIER:	TIER 8	TIER 15	



+52 1 477-201-0490
+52 1 444-408-7731



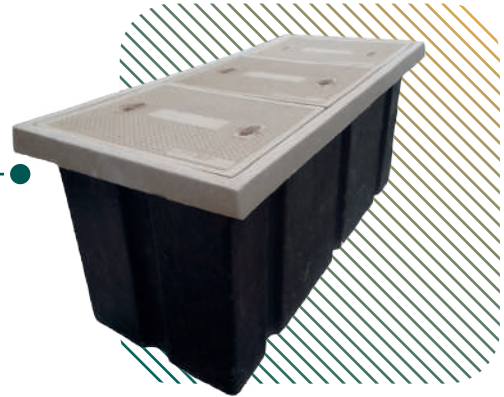
OFFICES: Valentín Canalizo #321. León, Gto. México 37234
FACTORY: Av. San Francisco #24 Col. Granjas de San Francisco.

MANHOLE WITH THREE COVERS

24"X 60" X 24"

Frame and three polymer concrete covers with fiberglass body and bolt for cover lifting

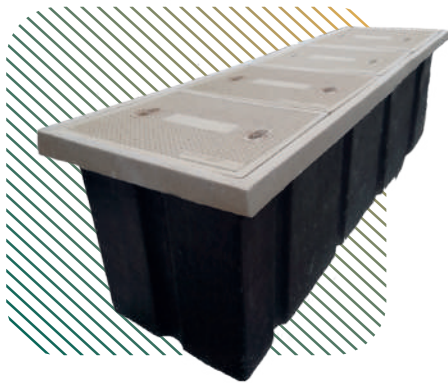
VERSIONS:	PEDESTRIAN	LIGHT TRAFFIC	
TIER:	TIER 8	TIER 15	



MANHOLE WITH FOUR COVERS

24"X 80" X 24"

Frame and four polymer concrete covers with fiberglass body and bolt for cover lifting



VERSIONS:	PEDESTRIAN	LIGHT TRAFFIC	
TIER:	TIER 8	TIER 15	

MANHOLE WITH FIVE COVERS

24" X 100" X 24"

Frame and five polymer concrete covers with fiberglass body and bolt for cover lifting

VERSIONS:	PEDESTRIAN	LIGHT TRAFFIC	
TIER:	TIER 8	TIER 15	



+52 1 477-201-0490
+52 1 444-408-7731



OFFICES: Valentín Canalizo #321. León, Gto. México 37234
FACTORY: Av. San Francisco #24 Col. Granjas de San Francisco.

MANHOLE WITH POLYMER COVER

48" X 48" X 48"

Manhole with frame, cover and ring of polymer concrete with anti-skid finish. Reinforced fiberglass body

VERSIONS:		LIGHT TRAFFIC	HEAVY TRAFFIC
TIER:		TIER 15	TIER 22



MINI MANHOLE WITH POLYMER COVER

48" X 48" X 24"

Medium voltage manhole for stream with polymer concrete slab and cover and fiberglass reinforced plastic body.



VERSIONS:		LIGHT TRAFFIC	HEAVY TRAFFIC
TIER:		TIER 15	TIER 22

ROAD MANHOLE

48" X 48" X 36"

Manufactured with a frame and two covers of polymer concrete and fiberglass reinforced plastic body.

VERSIONS:	PEDESTRIAN	LIGHT TRAFFIC	
TIER:	TIER 8	TIER 15	



+52 1 477-201-0490
+52 1 444-408-7731



OFFICES: Valentín Canalizo #321. León, Gto. México 37234

FACTORY: Av. San Francisco #24 Col. Granjas de San Francisco.



SIGNAGE CATALOGUE

COMMERCIAL
DIVISIONS

SIGNAGE

CATALOGUE

Products made of polymer concrete for signage and orientation.

DISABLE PEOPLE PLATE WITH LABEL

16" X 16"

24" x 24"

32" x 32"

International Symbol of Access plate.
Signage for people with disabilities,
blue plate with white pictogram with
label.

VERSIONS:	PEDESTRIAN		
TIER:	TIER 5		



DISABLED PEOPLE PLATE

16" X 16"

24" x 24"

32" x 32"

International Symbol of Access Plate.
Signage for people with disabilities, blue
plate with white pictogram.



VERSIONS:	PEDESTRIAN		
TIER:	TIER 5		



+52 1 477-201-0490
+52 1 444-408-7731



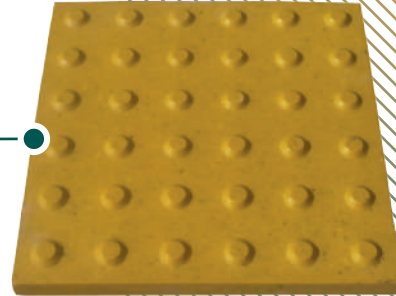
OFFICES: Valentín Canalizo #321. León, Gto. México 37234
FACTORY: Av. San Francisco #24 Col. Granjas de San Francisco.

CHANGE OF DIRECTION TACTILE GUIDE 36 STUDS

12" X 12"

Polymer concrete body tactile guides.
Non-customizable, non-theft susceptible
weather changes resistant.

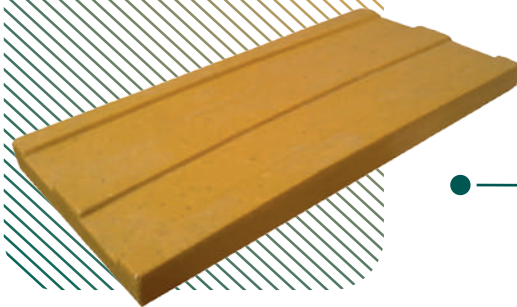
VERSIONS:	PEDESTRIAN		
TIER:	TIER 5		



LINEAR TACTILE GUIDE

8" X 16"

Polymer concrete body tactile guides.
Non-customizable, non-theft susceptible
weather changes resistant.



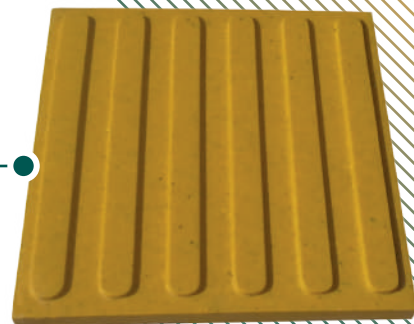
VERSIONS:	PEDESTRIAN		
TIER:	TIER 5		

BRAILLE TACTILE GUIDE

12" X 12"

Polymer concrete body tactile guides.
Non-customizable, non-theft susceptible
weather changes resistant.

VERSIONS:	PEDESTRIAN		
TIER:	TIER 5		



+52 1 477-201-0490
+52 1 444-408-7731

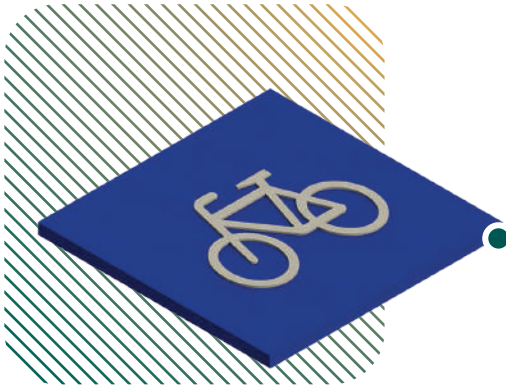


OFFICES: Valentín Canalizo #321. León, Gto. México 37234
FACTORY: Av. San Francisco #24 Col. Granjas de San Francisco.

SIGNAGE PLATE

Signage plate various uses.
Label: according to customer specifications.
Measures: according to customer specifications

VERSIONS:	PEDESTRIAN		
TIER:	TIER 5		



CYCLE PATH

12" X 12"
16" X 16"

Signage for cycle path, Body dyed blue and white pictogram

VERSIONS:	PEDESTRIAN		
TIER:	TIER 5		

WWW.CYVSE.COM

We are a company with more than 14 years of experience. We use state-of-the-art technology to manufacture high-quality precast polymer concrete covers and enclosures to offer the best product to our customers.





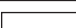
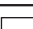

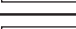











+52 1 477-201-0490
+52 1 444-408-7731



OFFICES: Valentín Canalizo #321. León, Gto. México 37234
FACTORY: Av. San Francisco #24 Col. Granjas de San Francisco.



Material	Size (L x W)	Shape	Depths	Performance	Rating
Fiberglass Reinforced Polymer w/ Polymer Concrete Ring	11" x 18"		12", 18"	Tier 15	Medium Duty
	13" x 24"		12", 18", 24"		
	14" x 19"		18", 24"		
	17" x 30"		12", 18", 24"		
	24" x 24"		24"		
	24" x 36"		18", 24", 30", 36", 48"		
	30" x 48"		18", 24", 30", 36"		
	30" x 60"		30", 36"		
	36" x 60"		24", 30", 36"		
	48" x 72"		36", 48"		
	48" x 96"		48"		
	10" dia		18"		
	18" dia		36", 48"		

TIER	 5	 8	 15	 22
POUNDS	5000	8000	15000	20000
Kg	2268	3630	6800	9980